



**CORPORATE & MANUFACTURING HEADQUARTERS**

434 W. Levers Place, Orange CA 92867  
ph: 714.637.1252  
www.skbcases.com

**SKB Europe**

Hamelendijk 2  
5541 RA Reusel  
Netherlands  
ph: +31 (0)497 339 836  
www.skb-europe.com

**i Series**

**R Series**

**Shock Racks**

**US Racks**

**Roto X**

**Rolling Roto Racks**

**Soft Racks**

**AV/Media**

**Pull Handle**

**Luggage Style**

**Heavy Duty**

**Low Profile**

**ATA Utility**

**Flat Screen Transport**

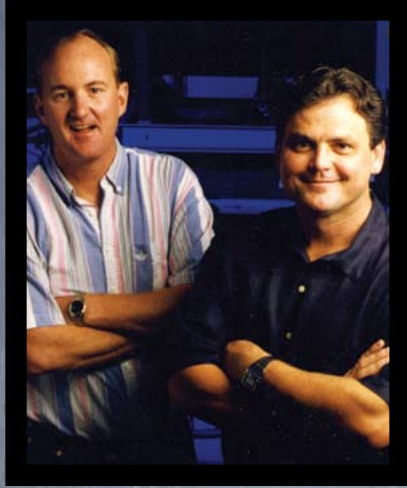
MILITARY / INDUSTRIAL



CASES

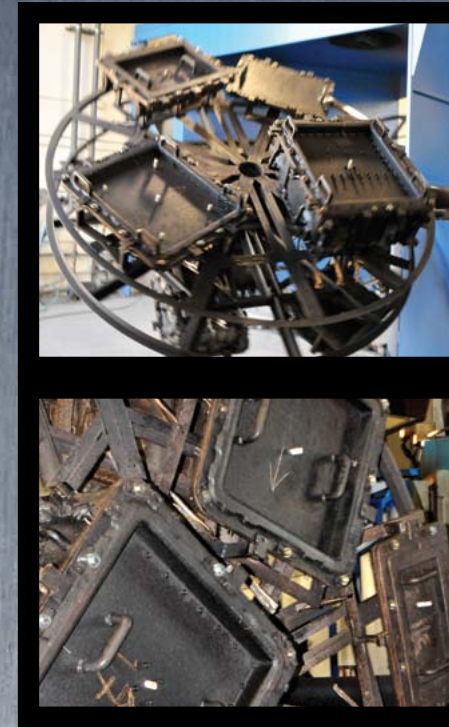
CASES

# Our Story



*Pictured above from left to right:  
SKB Owners/Founders - Dave Sanderson and Steve Kottman*

In 1977, two ambitious college students developed the first SKB case in a small Anaheim, California garage. Today, SKB cases are known around the world as the leading innovator and manufacturer of the finest musical instrument and equipment cases. Since the inception of our company, in addition to SKB branded products, leading companies have proudly supplied SKB cases for protection of their own products. SKB builds cases for four different major markets (Music, Sports, Industrial and Military) and that diversity allows us to be more creative and innovative in our case designs across the board. We have a true sense of accomplishment for more than 35 years of steady growth and for our adherence to quality standards that has made us industry leaders. We never lose sight of the fact that our customers give us the opportunity to excel and we are grateful for their trust and loyalty. We remain dedicated to the assurance that every case with a SKB logo has been manufactured with an unconditional commitment to unsurpassed quality.



## Roto-Mold

In 1997, SKB invested in roto-mold machinery that is ideal for making larger cases and cylindrical cases. The PE roto-mold material starts as a fine powder that is measured according to the size of the case. The material is then sealed up in a multi-piece aluminum mold and fixed on a biaxial rotating wheel. The material is heated at 800 degrees in a very large oven while constantly rotating. The powder melts and coats the inside of the mold and after cooling, the cast is disassembled and the case is removed. Roto-Molding is great at providing maximum protection and can withstand maximum impact in transport.

# Construction Methods

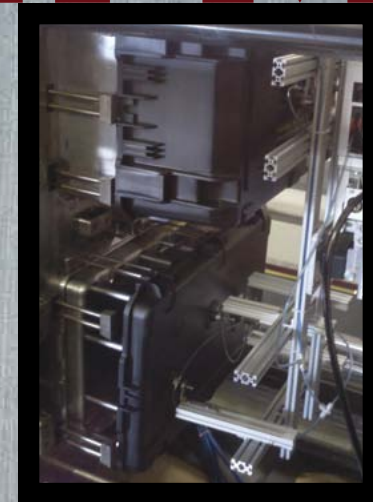


*Pictured: Vacuum mold for keyboard case.*

## Vacuum Form

Also known as thermal form, this was the first and most recognized "SKB Style" case. This method is very popular for guitar or band instrument cases. In 1990, SKB developed the first vacuum formed rack case. ABS\* or PE\* is formed into solid sheets of material. The sheets are heated and are vacuum formed around aluminum castings, thus taking the shape of the mold. The edges have the distinctive aluminum valance that provides rigid construction as well as a secure fit. Vacuum formed products are known for the light weight and extreme durability.

\*Acrylonitrile Butadiene Styrene (ABS), Polyethylene (PE)



*One of our Injection Molders in action*

## Injection-Mold

This is SKB's latest venture in our quest to provide the most innovative hard shell case products. Injection molding is an expensive investment and there is no room for error. Made with extreme pressure, even the smallest injection molded part requires a very large and heavy mold. SKB has molds that weigh almost 30,000lbs! Many of our parts, such as our patented trigger latches are produced by the injection mold process. Our 3i case series includes a gasket that makes the case watertight and dust proof. Our latest injection molded cases for guitars and basses are very popular with touring musicians. These cases have dual lives as they are also used for military weapons. Never before has an ATA flight case been so light weight, yet so advanced.

**"Today, SKB Cases are known around the world as the leading innovator and manufacturer of the finest Industrial/Military equipment cases."**

# iSERIES

Injection Molded Watertight Cases



- **Lighter, Stronger and Better Priced**

Impact lab tested and shown to be over 2.5 times stronger than the competition.

- **Watertight and Dustproof**

Meets Standards: MIL-STD-810G MIL-STD-2073 MIL-C-4150J STANAG 4280  
DEF-STAN 81-41 ATA 300.

- **Lifetime Warranty**

SKB brand hardshell cases are fully warranted against defects in materials and craftsmanship for the life of the case to the original owner.

Watertight/dust proof design using tongue & groove construction and a replaceable o-ring seal to achieve an IP-67 rated protective case.

Ultimate impact strength polypropylene co-polymer provides unsurpassed protection and is lighter while being multiple times stronger than the competition.

Automatic ambient pressure equalization valve allows case to "Free Breathe" and equalize pressures caused by altitude or temperature change while keeping water molecules out, even when submerged.

Extra wide lift/carry handle for comfortable balance/2 hand lift.

Patented "Trigger Latches" stay closed until you want them opened. Key locking "TSA" accepted versions are available.

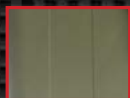
Secure interlocking features ensure stable stacking on uneven surfaces.

Quiet glide polyurethane in-line skate style wheels with factory lubricated sealed ball bearings ensure smooth trouble free movement.

Reinforced padlock hasps allow the use of standard size padlocks for added security. SKB TSA accepted padlocks are an available accessory.

Flush snap-down overmolded handle for 2 man lift on large or long cases. Cushion grip overmold material reduces hand fatigue.

OD Green



Desert Tan



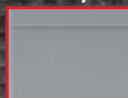
Safety Yellow



Safety Orange



Grey



Custom colors, Special options, and interiors are available, contact any SKB Team Member for details.  
Pictured on the spread: Tan colored SKB 3i-5014-6 Case with Custom sniper rifle foam insert.



# iSERIES



## INDESTRUCTIBLE



**3i-1813-5**  
MIL-STANDARD, SUBMERSIBLE,  
MULTI-FUNCTIONAL TRANSPORT  
SERIES.

**3i-0907-6**

ORANGE, CA

**i series**

### Case Specifications & Features

PART#	INSIDE L x W x H	LID DEPTH	BASE DEPTH	Pull Handle/Wheels	Dividers	Cubed	Layered
3i-0907-4	9.5" x 7.38" x 4.13" / 24.13 cm x 18.7 cm x 10.4 cm	1.19"/3 cm	2.94"/7.4 cm		X	X	X
3i-0907-6	9.38" x 7.38" x 6.13" / 23.8 cm x 18.7 cm x 15.5 cm	1.19"/3 cm	4.94"/12.5 cm		X	X	X
3i-1209-4	12" x 9" x 4.5" / 30.4 cm x 22.8 cm x 11.4 cm	1.50"/3.8 cm	3"/7.63 cm		X	X	X
3i-1510-6	15" x 10.38" x 6" / 38.1 cm x 26.3 cm x 15.2 cm	1.75"/4.4 cm	4.25"/10.7 cm			X	
3i-1610-5	16" x 10" x 5.5" / 40.6 cm x 25.4 cm x 13.9 cm	2"/5 cm	3.5"/8.89 cm		X	X	X
3i-1711-6	17" x 11.5" x 6" / 43.18 cm x 29.21 cm x 15.24 cm	1.75"/4.4 cm	4.25"/10.8 cm		X	X	X
3i-1813-5	18.5" x 13" x 4.75" / 47 cm x 33 cm x 12 cm	1.5"/3.8 cm	3.25"/8.25 cm		X	X	X
3i-1813-7	18.5" x 13" x 7" / 47 cm x 33 cm x 17.7 cm	1.5"/3.8 cm	5.5"/13.9 cm		X	X	
3i-1914-8	19" x 14.38" x 8" / 48.26 cm x 36.5 cm x 20 cm	2"/5 cm	6"/15.24 cm	X	X	X	X
3i-1914N-8	19" x 14.5" x 8" / 48.26 cm x 36.83 cm x 20 cm	2"/5 cm	6"/15.24 cm			X	X
3i-2011-7	20.38" x 11.44" x 7.5" / 51.7 cm x 29 cm x 19 cm	2"/5 cm	5.5"/13.9 cm	X	X	X	
3i-2011-8	20.38" x 11.44" x 8.25" / 51.7 cm x 29 cm x 20.9 cm	2"/5 cm	6.25"/15.8 cm		X	X	
3i-2015-7	20.5" x 15.5" x 7.5" / 52 cm x 39.3 cm x 19 cm	2"/5 cm	5.5"/13.9 cm	X	X		
3i-2015-10	20.5" x 15.5" x 10" / 52 cm x 39.3 cm x 25.4 cm	2"/5 cm	8"/20.3 cm	X	X	X	
3i-2217-8	22" x 17" x 8" / 55.88 cm x 43 cm x 20.32 cm	2"/5 cm	6"/15.24 cm		X	X	
3i-2217-10	22" x 17" x 10.5" / 55.88 cm x 43 cm x 25.4 cm	2"/5 cm	8.5"/21.6 cm	X		X	
3i-2217-12	22" x 17" x 12.5" / 55.88 cm x 43 cm x 26.67 cm	2"/5 cm	8.5"/21.6 cm	X		X	
3i-2222-12	22.5" x 22.5" x 12.5" / 57.15 cm x 57.15 cm x 31.75 cm	2"/5 cm	10.5"/26.6 cm	X		X	
3i-2317-14	23" x 17" x 14" / 58.42 cm x 43 cm x 35.5 cm	2.5"/6.35 cm	11.5"/29.2 cm	X		X	
3i-2918-10	29" x 18" x 10.85" / 73.66 cm x 45.7 cm x 27.5 cm	2"/5 cm	8.85"/22 cm		X		
3i-2918-14	29" x 18" x 14" / 73.66 cm x 45.7 cm x 35.5 cm	2.5"/6.35 cm	11.5"/29.2 cm	X		X	
3i-3614-6	36.5" x 14.5" x 6" / 92.7 cm x 36.83 cm x 15 cm	1.5"/3.8 cm	4.5"/11.43 cm	X			X
3i-4214-5	42.5" x 14.5" x 5.5" / 107.9 cm x 36.83 cm x 14 cm	1.5"/3.8 cm	4"/10.16 cm	X			X
3i-4217-7	42.5" x 17" x 7.5" / 107.9 cm x 43.18 cm x 19 cm	2"/5 cm	5.5"/13.9 cm	X			X
3i-5014-6	50.5" x 14.5" x 6" / 128.27 cm x 36.83 cm x 15 cm	1.5"/3.8 cm	4.5"/11.43 cm	X			X

**3i-4214-5 B**

- i-Series
- INT. Length/Width
- INT. Total Depth
- Color (black)

25 sizes and counting. Custom foam, Hot Stamping, colors and options available in minimum quantities.



# R SERIES



## Rotationally Molded Watertight Cases

Rotomolded for strength and ergonomic design, these cases are impenetrable, yet lightweight with a LLDPE shell for maximum impact resistance. UV, solvent, corrosion and fungus resistant with black powder coated stainless steel hardware to prevent rusting. Comfortable, spring-loaded, rubber over-molded handles, these cases are designed to withstand levels of punishment in excess of all ATA and most industrial and military shipping specifications.



**3R5030-24B-E**  
MEETS AND EXCEEDS ALL ATA, INDUSTRIAL AND  
MILITARY SHIPPING SPECIFICATIONS.



**3R1919-14B-E**  
MIL-STANDARD, WATERTIGHT,  
CARGO SERIES.

# R SERIES



Rotationally molded for strength, our superior R Series cases are ergonomically designed, lightweight and impenetrable.



**3R4417-8**  
**IMPENETRABLE AND LIGHTWEIGHT**  
**WITH A LLDPE SHELL FOR MAXIMUM**  
**IMPACT RESISTANCE.**



## Case Specifications & Features

PART#	INSIDE L x W x H	LID DEPTH	BASE DEPTH	Pull Handle/Wheels	Castor Kit*	Padded Dividers	Cubed Foam	Layered Foam
3R1919-14B	19" x 18.75" x 14.375"/48.26 cm x 47.6 cm x 36.5 cm	3"/7.62 cm	11.375"/28.9 cm	X			X	
3R2216-15B	22" x 16" x 15"/55.9 cm x 40.6 cm x 38.1 cm	3"/7.62 cm	12"/30.5 cm					
3R2217-10B	22" x 17" x 10.5"/55.9 cm x 43.18 cm x 26.67 cm	3"/7.62 cm	7.5"/19 cm	X		X	X	
3R2222-12B	22" x 22" x 12"/55.9 cm x 55.9 cm x 30.5 cm	3"/7.62 cm	9"/22.86 cm	X		X	X	
3R2222-20B	22" x 22" x 20"/55.9 cm x 55.9 cm x 50.8 cm	3.5"/8.9 cm	16.5"/42 cm	X		X		
3R2423-17B	24" x 23" x 17"/61 cm x 58.5 cm x 43 cm	3.5"/8.9 cm	13.5"/34.30 cm	X			X	
3R2424-24B	24" x 24" x 24"/61 cm x 61 cm x 61 cm	3.5"/8.9 cm	20.5"/52 cm		X			X
3R2727-18B	27" x 27" x 18"/68.5 cm x 68.5 cm x 45.7 cm	3.5"/8.9 cm	20.5"/52 cm		X			X
3R2727-27B	27" x 27" x 27"/68.5 cm x 68.5 cm x 68.5 cm	3.5"/8.9 cm	23.5"/59.6		X			X
3R2817-10B	29" x 17.5" x 10.5"/73.6 cm x 44.5 cm x 26.67 cm	2"/5.8 cm	8.5"/21.6	X			X	
3R3025-15B	30" x 25" x 15"/76.2 cm x 63.5 cm x 38.1 cm	3.5"/8.9 cm	11.5"/29.21 cm	X			X	
3R3214-15B	32" x 14.5" x 15.75"/81.28 cm x 36.83 x 40 cm	3.75"/9.5	12.5"/31.75 cm	X			X	
3R4024-18B	40" x 24" x 18"/101.6 cm x 61 cm x 45.72 cm	3.5"/8.9 cm	14.5"/37 cm			X	X	
3R4024-24B	40" x 24" x 24"/101.6 cm x 61 cm x 61 cm	3.5"/8.9 cm	20.5"/52 cm			X	X	
3R4417-8B-EW	44.25" x 17.5" x 8"/112 cm x 44.5 x 20 cm	3.125"/8 cm	4.875"/12.4 cm	X				
3R4530-24B	45" x 30" x 24"/114 cm x 76 cm x 61 cm	3.5"/8.9 cm	20.5"/52 cm		X			
3R4909-5B-E	49.5" x 9" x 5.5"/125 cm x 23 cm x 14 cm	2.25"/5.8 cm	3.5"/8.9 cm					
3R5030-24B	50" x 30" x 24"/127 cm x 76 cm x 61 cm	3.5"/8.9 cm	20.5"/52 cm		X			
3R5212-7B-EW	52.5" x 12.125" x 8"/133 cm x 31 cm x 20 cm	3.125"/8 cm	4.875"/12.4 cm	X				
3R6218-10B-EW	62.625" x 18.25" x 10"/160 cm x 46 cm x 25 cm	3"/7.6 cm	7"/17.8	X				
3R6223-10B-EW	62.625" x 23.25" x 10"/160 cm x 60 cm x 25 cm	3"/7.6 cm	7"/17.8	X				
3R5212-7B-EW**	52.5" x 12.125" x 8"/133 cm x 30.8 cm x 20 cm	3.125"/8 cm	4.875"/12.4 cm	X				

\*3SKB-CAST1 Castor Plate & Wheel Kit available separately



# SHOCK RACKS



## Rotationally Molded Shock Rack Cases

All models of SKB's Shock Rack cases are rotationally molded of LMDPE for maximum impact resistance, and feature the latest in shockmount technology with elastomeric shocks, threaded steel rails and aluminum cross components for strength and durability. All models of Shock Racks have EIA standard 19" rack width and include rear rails and covers for support and accessibility. The 28" and Pullout Shock Racks have standard square hole rack rails and accept most sliding rail kits.



**20" Roto Rolling Shock Racks**



**28" Roto Shock Racks**



**20" Roto Shock Racks**



**30" Roto Shock Racks**



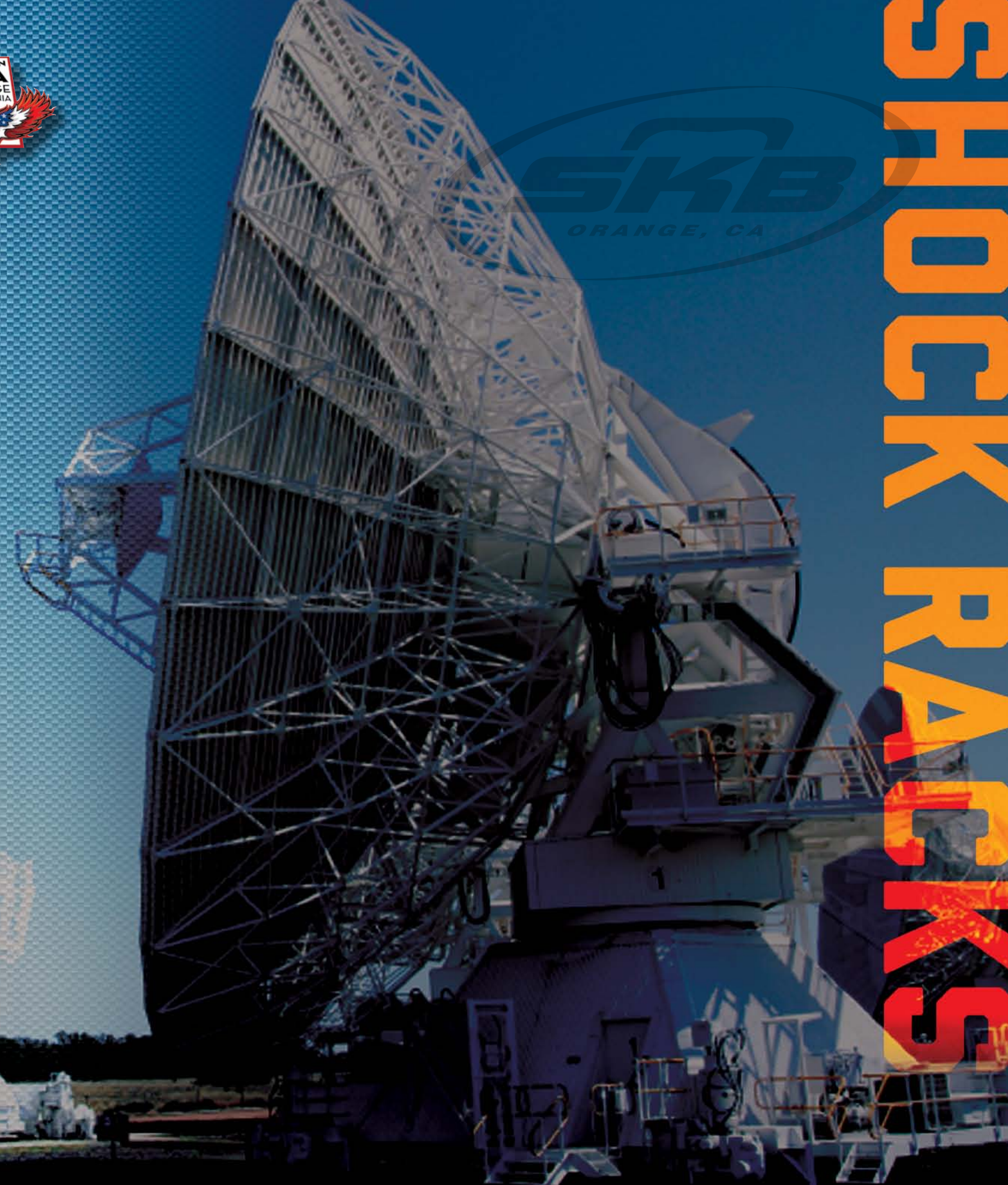
**24" Roto Shock Racks**



**Pullout Shock Racks**



SHOCK RACKS



# SHOCK RACKS



## 20"

### Case Specifications

Standard Rack depth - front to rear rail: 20" / 51 cm

PART#	LID DEPTH	RACK UNITS	RACK HEIGHT	CASE WEIGHT lbs./ kg
1SKB-R904U20	2.25" / 5.7 cm	4 space	7" / 17.8 cm	36 / 16.3
1SKB-R906U20	2.25" / 5.7 cm	6 space	10.5" / 26.7 cm	43.3 / 19.6
1SKB-R908U20	3.25" / 8.3 cm	8 space	14" / 35.6 cm	46.5 / 21.1
1SKB-R910U20	3.25" / 8.3 cm	10 space	17.5" / 44.5 cm	54.4 / 24.7
1SKB-R912U20	3.25" / 8.3 cm	12 space	21" / 53.3 cm	57 / 25.9
1SKB-R914U20	3.25" / 8.3 cm	14 space	24.5" / 62.2 cm	68.6 / 31.1
1SKB-1916U20	3.25" / 8.3 cm	16 space	28" / 71.1 cm	76 / 34.5
1SKB-1916	Caster Cart			

Our 20" Roto Shock Racks feature a redesigned frame with threaded steel rails and aluminum cross components forming an "H" shaped rigid configuration.



**1SKB-R904U20**

## 20" Rolling

### Case Specifications

Standard Rack depth - front to rear rail: 20" / 51 cm

PART#	LID DEPTH	RACK UNITS	RACK HEIGHT	CASE WEIGHT lbs./ kg
3SKB-R04U20W	2.25" / 5.7 cm	4 space	7" / 17.8 cm	44.3 / 20.1
1SKB-R04MAC	2.25" / 5.7 cm	4 space	7" / 17.8 cm	44.3 / 20.1
3SKB-R06U20W	2.25" / 8.3 cm	6 space	10.5" / 26.7 cm	50.7 / 23
3SKB-R08U20W	3.25" / 8.3 cm	8 space	14" / 35.6 cm	56.7 / 25.7
3SKB-R10U20W	3.25" / 8.3 cm	10 space	17.5" / 44.5 cm	61.7 / 28
3SKB-R12U20W	3.25" / 8.3 cm	12 space	21" / 53.3 cm	68 / 30.8

Our 20" Roto Rolling Shock Racks feature eight elastomeric shocks with a standard payload range from 40 lbs. to 150 lbs.

### **3SKB-R06U20W**

Our 20" Roto Rolling Shock Racks feature secure stacking design, recessed in-line wheels and sliding retractable handle for easy portability.



# 15

# SHOCK RACKS



## 24"

### Case Specifications

Standard Rack depth - front to rear rail: 24"/61 cm

PART#	LID DEPTH	RACK UNITS	RACK HEIGHT	CASE WEIGHT lbs./ kg
3SKB-R904U24	4.5"/11.4 cm	4 space	7"/17.8 cm	58 / 26.3
3SKB-R906U24	4.5"/11.4 cm	6 space	10.5"/26.7 cm	66.7 / 30.2
3SKB-R908U24	4.5"/11.4 cm	8 space	14"/35.6 cm	74.7 / 33.9
3SKB-R910U24	4.5"/11.4 cm	10 space	17.5"/44.5 cm	79.9 / 36.2
3SKB-R912U24	4.5"/11.4 cm	12 space	21"/53.3 cm	83.3 / 37.8
3SKB-R914U24	4.5"/11.4 cm	14 space	24.5"/62.2 cm	94.2 / 42.7
3SKB-R916U24	4.5"/11.4 cm	16 space	28"/71.1 cm	102.6 / 46.5



With a unique "plug" style lid sealing system, lids penetrate the body with an approximate 1" molded-in protrusion that provides outstanding sealing and anti-shear properties.



Slide mount casters with "spring-out" position stops included. Standard high quality slide-in/out locking swivel 4" casters rated at 1,200lbs.

### 3SKB-R916U24

Patent-pending compound hinge system allows the lids to swing open 270 degrees.

## 28"

### Case Specifications

Standard Rack depth - front to rear rail: 29.25"/74.3 cm

PART#	LID DEPTH	RACK UNITS	RACK HEIGHT	CASE WEIGHT lbs./ kg
3SKB-R904U28	4.5"/11.4 cm	4 space	7"/17.8 cm	61.5 / 27.9
3SKB-R906U28	4.5"/11.4 cm	6 space	10.5"/26.7 cm	67.8 / 30.7
3SKB-R908U28	4.5"/11.4 cm	8 space	14"/35.6 cm	78.2 / 35.5
3SKB-R910U28	4.5"/11.4 cm	10 space	17.5"/44.5 cm	81.3 / 36.9



Our 28" Roto Shock Racks feature a 29.25" deep design and are equipped with standard square hole rack plates and includes the SKB ARCS System which accepts optional Rail Plate Kits. This system is adjustable in width and accepts most sliding rail kits.

### 3SKB-R904U28

Additional or stiffer shock mounts may be ordered from the factory and are easily field-installed for extended payload ranges.

# 17

# SHOCK RACKS



## 30"

### Case Specifications

Standard Rack depth - front to rear rail: 30"/76.2 cm

PART#	LID DEPTH	RACK UNITS	RACK HEIGHT	CASE WEIGHT lbs./ kg
3SKB-R904U30	4.5"/ 11.4 cm	4 space	7"/ 17.8 cm	60.8 / 27.6
3SKB-R906U30	4.5"/ 11.4 cm	6 space	10.5"/ 26.7 cm	66.8 / 30.3
3SKB-R908U30	4.5"/ 11.4 cm	8 space	14"/ 35.6 cm	76.8 / 34.8
3SKB-R910U30	4.5"/ 11.4 cm	10 space	17.5"/ 44.5 cm	79.9 / 36.2



Standard high quality slide-in/out locking swivel 4" casters rated at 1,200lbs.



The 30" deep series is designed to accept longer rack mount equipment and servers.

### 1SKB-R906U30

The 30" deep, Roto Shock Rack is ATA rated and is built to withstand the rigors of military transport abuse.

## 3RR Pullout Series

Removable (slide out) inner rack system designed to meet ANSI/EIA-310-C standards with patent pending "positive lock" inner rack latch.

Lid hangars (standard)

### 3RR-7U24-25

2" front lid and 5" rear lid with edge casters standard. Other color options available.



### 3RR-9U24-25

Black powder coated stainless steel hardware (standard) which is recessed for protection.

# 19

# SHOCK RACKS

## PULLOUT



**3RR-3U24-25**



**3RR-4U24-25**

**3RR-5U24-25**

**3RR-9U24-25**

### Case Specifications

Standard Rack depth - front to rear rail: 24" / 61 cm

PART#	LID DEPTH		RACK UNITS	RACK HEIGHT	CASE WEIGHT lbs./kg.
	FRONT	REAR			
3RR-3U24-25	2" / 5.1 cm	5" / 12.7 cm	3 space	5.25" / 13.34 cm	59 / 26.8
3RR-4U24-25	2" / 5.1 cm	5" / 12.7 cm	4 space	7" / 17.8 cm	62 / 28.1
3RR-5U24-25	2" / 5.1 cm	5" / 12.7 cm	5 space	8.75" / 22.23 cm	66 / 29.9
3RR-7U24-25	2" / 5.1 cm	5" / 12.7 cm	7 space	12.25" / 31.1 cm	71 / 32.2
3RR-9U24-25	2" / 5.1 cm	5" / 12.7 cm	9 space	15.75" / 40 cm	78 / 35.4
3RR-11U24-25	2" / 5.1 cm	5" / 12.7 cm	11 space	19.25" / 48.9 cm	84 / 38.1
3RR-14U24-25	2" / 5.1 cm	5" / 12.7 cm	14 space	24.5" / 62.2 cm	92 / 41.7



Case coupling straps come standard and molded in stacking ribs and lugs are designed to stack with competitive manufacturers cases.

**Reduced footprint 24" wide design to fit two wide in most military vehicles.**



### 3RR-9U24-25

8 comfort grip spring loaded lift handles and recessed in-line style wheels for easy portability.

# RACKS

## From Standard Vacuum Formed to Rolling Roto Rack Cases

SKB Racks are EIA standard 19" rackmount width and available in various sizes and rack depths. Standard model racks are vacuum formed of ultra high strength polyethylene with a custom formed aluminum valance and front and rear covers with twist latches. The US Series racks, Shallow X-racks, Roll-X and Rolling Roto Racks are a one piece roto molded design from a LMDPE polyethylene plastic for high impact strength and durability.



**1SKB-R4, R8, R10**



**1SKB-XRACK2**



**1SKB-RLX4**



# US SERIES

Ultimate Strength

The US Series is the ultimate in American technology with its recognizable patented deep Roto-X pattern for solid stackability, recessed heavy-duty twist latches, molded in handles and anti-skid rubber feet.



**1SKB-R4, R8, R10**  
Secure stacking, Roto Molded and ATA Rated.

## Case Specifications

Standard Rack depth - front to rear rail: 17.5"/44.45 cm

PART#	LID DEPTH	RACK UNITS	RACK HEIGHT	CASE WEIGHT lbs./kg
1SKB-R2	2" / 5.1 cm	2 space	3.5" / 8.9 cm	10.75 / 4.88
1SKB-R4	2" / 5.1 cm	4 space	7" / 17.8 cm	12.75 / 5.78
1SKB-R6	2" / 5.1 cm	6 space	10.5" / 26.7 cm	14.90 / 6.76
1SKB-R8	2" / 5.1 cm	8 space	14" / 35.6 cm	19.10 / 8.66
1SKB-R10	2" / 5.1 cm	10 space	17.5" / 44.5 cm	20.46 / 9.28
1SKB-R12	2" / 5.1 cm	12 space	21" / 53.3 cm	23.35 / 10.59



**1SKB-1904**  
Castor Cart.



**1SKB-R8**  
Eight space rack pictured with both front and rear lids removed.

**1SKB-R4**  
Roto molded uni-body construction.

25

# STANDARD

## Vacuum Formed Standard Rack Cases

19" deep stackable vacuum formed standard racks made of ultra high strength polyethylene.



### Case Specifications

PART#	INSIDE L x W x H	LID DEPTH	BODY DEPTH	CASE WEIGHT lbs./kg
1SKB19-2U	19" x 15" x 3.50"/48.3cm x 38.1cm x 8.9cm	2.5"/6.4cm	15"/38.1cm	9 / 4.08
1SKB19-3U	19" x 15.75" x 5.25"/48.3cm x 40cm x 13.3cm	2.5"/6.4cm	15.75"/40cm	11.3 / 5.12
1SKB19-4U	19" x 15.75" x 7"/48.3cm x 40cm x 17.8cm	2.5"/6.4cm	15.75"/40cm	12.2 / 5.53
1SKB19-6U	19" x 15.75" x 10.5"/48.3cm x 40cm x 26.7cm	2.5"/6.4cm	15.75"/40cm	14.7 / 6.67
1SKB19-8U	19" x 15.75" x 14"/48.3cm x 40cm x 35.6cm	2.5"/6.4cm	15.75"/40cm	16.55 / 7.51
1SKB19-10U	19" x 15.75" x 17.5"/48.3cm x 40cm x 44.5cm	2.5"/6.4cm	15.75"/40cm	19.85 / 9
1SKB19-12U	19" x 15.75" x 21"/48.3cm x 40cm x 53.3cm	2.5"/6.4cm	15.75"/40cm	21.2 / 9.61

# ROLL X RACKS

## Rotationally Molded Rack Cases

Roll-X cases have a depth of 17.75" and accommodate 19" rack mountable equipment.



### Case Specifications

PART#	INSIDE L x W x H	LID DEPTH	BODY DEPTH	CASE WEIGHT lbs./kg
1SKB-RLX3	19" x 17.5" x 5.25"/48.3cm x 44.5cm x 13.3cm	2"/5.1cm	17.50"/44.5cm	11.6 / 5.26
1SKB-RLX4	19" x 17.5" x 7"/48.3cm x 44.5cm x 17.8cm	2"/5.1cm	17.50"/44.5cm	12.05 / 5.46
1SKB-RLX5	19" x 17.50" x 8.75"/48.3cm x 44.5cm x 22.2cm	2"/5.1cm	17.50"/44.5cm	13.7 / 6.21
1SKB-RLX6	19" x 17.50" x 10.5"/48.3cm x 44.5cm x 26.7cm	2"/5.1cm	17.50"/44.5cm	16.15 / 7.32

# SHALLOW X RACKS

## Rotationally Molded Rack Cases

10.5" depth X-racks accommodate a variety of smaller components. This series includes a plug style rear access panel.



### Case Specifications

PART#	INSIDE L x W x H	LID DEPTH	BODY DEPTH	CASE WEIGHT lbs./kg
1SKB-XRACK2	19" x 10.375" x 3.50"/48.3cm x 26.4cm x 8.9cm	2"/5.1cm	10.375"/26.4cm	6.4 / 2.90
1SKB-XRACK3	19" x 10.375" x 5.25"/48.3cm x 26.4cm x 13.3cm	2"/5.1cm	10.375"/26.4cm	7.15 / 3.24
1SKB-XRACK4	19" x 10.375" x 7"/48.3cm x 26.4cm x 17.8cm	2"/5.1cm	10.375"/26.4cm	8.45 / 3.82

# ROLLING ROTO RACKS

## Rotationally Molded Rack Cases

Roto Rolling Rack models offer secure protection with the convenience of sturdy built-in wheels and a pull handle.



### Case Specifications

PART#	INSIDE L x W x H	LID DEPTH	BODY DEPTH	CASE WEIGHT lbs./kg
1SKB-R4W	19" x 17.5" x 7"/48.3cm x 44.5cm x 17.8cm	1.125"/2.9cm	19"/48.3cm	17.25 / 7.82
1SKB-R6W	19" x 17.5" x 10.5"/48.3cm x 44.5cm x 26.7cm	1.125"/2.9cm	19"/48.3cm	19.6 / 8.89
1SKB-R8W	19" x 17.5" x 10.5"/48.3cm x 44.5cm x 26.7cm	1.125"/2.9cm	19"/48.3cm	19.6

# ROTO X



## Roto Molded Cases

Rotationally molded shipping containers with the Roto X pattern that stack securely for efficient transport and storage. Optional heavy-duty wheels for maximum mobility. Recessed, heavy-duty twist latches will accommodate a customer supplied padlock. Spring-loaded handles are also recessed for protection.



# ROTO X



Rotationally molded for maximum strength and impact resistance. Recommended for heavy equipment transport and available in over 20 stock sizes.



## case specifications & features

PART#	INSIDE L x W x H	LID DEPTH	BODY DEPTH	CASE WEIGHT lbs./kg
3SKB-X1814-12	18" x 14" x 12"/45.7cm x 35.6cm x 30.5cm	3"/7.6cm	9"/22.9cm	15.8 / 7.17
3SKB-X1818-10	18" x 18" x 9"/45.7cm x 45.7cm x 22.9cm	4.5"/11.4cm	4.5"/11.4cm	17.15 / 7.78
3SKB-X1818-14	18" x 18" x 14"/45.7cm x 45.7cm x 35.6cm	4.5"/11.4cm	9.5"/24.1cm	17.75 / 8.05
3SKB-X1818-18	18" x 18" x 18"/45.7cm x 45.7cm x 45.7cm	4"/10.2cm	14"/35.6cm	22.85 / 10.36
3SKB-X2318-16	23" x 18" x 16"/45.7cm x 35.6cm x 30.5cm	3"/7.6cm	13"/33cm	24.05 / 10.91
3SKB-X2415-10	24" x 15" x 10"/61cm x 38.1cm x 25.4cm	5"/12.7cm	5"/12.7cm	30 / 13.61
3SKB-X2424-14	24" x 24" x 14"/61cm x 61cm x 35.6cm	3"/7.6cm	11"/27.9cm	29.65 / 13.45
3SKB-X2424-18	24" x 24" x 18"/61cm x 61cm x 45.7cm	3"/7.6cm	15"/38.1cm	31.5 / 14.29
3SKB-X2424-22	24" x 24" x 22"/61cm x 61cm x 55.9cm	7"/17.8cm	15"/38.1cm	33 / 14.97
3SKB-X2513-16	25.25" x 12.75" x 16"/64.1cm x 32.4cm x 40.6cm	4"/10.2cm	12"/30.5cm	21.7 / 9.84
3SKB-X2624-32	26" x 24" x 32"/66cm x 61cm x 81.3cm	12"/30.5cm	20"/50.8cm	47.15 / 21.38
3SKB-X2719-10	27" x 19" x 10"/68.6cm x 48.3cm x 25.4cm	5"/12.7cm	5"/12.7cm	22.45 / 10.18
3SKB-X2828-22	28" x 28" x 22"/71.1cm x 71.1cm x 55.9cm	8"/20.3cm	14"/35.6cm	42.5 / 19.27
3SKB-X2915-14	29" x 15" x 14"/73.7cm x 38.1cm x 35.6cm	3"/7.6cm	11"/27.9cm	23.8 / 10.79
3SKB-X3226-30	32" x 26" x 30"/81.3cm x 66cm x 76.2cm	8"/20.3cm	22"/55.9cm	53.85 / 24.42
3SKB-X3426-16	34" x 26" x 16"/86.4cm x 66cm x 40.6cm	3"/7.6cm	13"/33cm	30.4 / 13.79
3SKB-X3518-15	35" x 18" x 15"/88.9cm x 45.7cm x 38.1cm	5"/12.7cm	10"/25.4cm	30.8 / 13.97
3SKB-X3722-21	37.25" x 21.75" x 21.75"/94.6cm x 55.2cm x 55.2cm	6.5"/16.5cm	15.25"/38.7cm	44.85 / 20.34
3SKB-X4530-24*	43.25" x 28.25" x 21.75"/94.6cm x 55.2cm x 55.2cm	3.25"/8.3cm	18.50"/47cm	71.8 / 32.56
3SKB-X5026-16	50" x 26" x 16"/127cm x 66cm x 40.6cm	3"/7.6cm	13"/33cm	65.45 / 29.68
3SKB-X5030-24	50" x 30" x 24"/127cm x 76.2cm x 61cm	4"/10.2cm	20"/50.8cm	87.5 / 39.68

\*Includes Wheels



# AUDIO/VIDEO

Our GigRig's have a uni-body construction that is extremely durable. The 7° angled top steel rails are 12U rack spaces with extra room in the back for cable connections.



## 1SKB19-R1208

The R1208 GigRig has a uni-body construction that is extremely durable

## 1SKB-R1906

Designed to add expandability to the new 1SKB-R102, 1SKB-R104 and 1SKB-R106, as well as the 1SKB19-R1006(V), 1SKB19-R1010(V) and the 1SKB19-R1208.



## 1SKB19-R1010

The roto molded design includes 10U of angled rack space on the top for mixers and 10U of vertical rack space for outboard effects and amps.

## 1SKB19-R1006

The 1SKB19-R1006 Roto Mini GigRig is the little brother of the Roto GigRig.



## 1SKB-AV8

8U retractable shelf designed to be used with our 1SKB-R102, 104 and 106 Audio Rack system.



## 1SKB-R104

The 1SKB-R104 is a 10U slanted top and 4U front rack case that features steel threaded rails, hard lid and doors, side access ports (for cable routing) and has enough space to mount the AV-8 with the lid closed.

# AUDIO/VIDEO

Plasma/LCD Monitor Cases are Rotationally molded for maximum impact resistance to protect and transport large flat screen monitors. Corner wheels for tilting and easy transport.



**3SKB-2026**  
Holds 20" to 26" Plasma/LCD Monitors in desirable upright position. Can be shipped standard UPS or Fed X.

## **3SKB-5260**

Accommodating 52" to 60" Plasma/LCD Monitors, the 3SKB-5260 LCD Screen Case is rotationally molded for maximum impact resistance.

Forklift ready slots.



## **3SKB-3237**

Accommodating 32" to 37" Plasma/LCD Monitors, the 3SKB-3237 Case is rotationally molded. The perfect solution for storing your larger LCD screens in the storeroom or transporting to the trade show or conference center.

Not pictured **3SKB-4250**  
Accommodating 42" to 50" Plasma/LCD Monitors



# UTILITY CASES

## LP SERIES

**Low Profile ATA Transport Cases with Wheels** Heavy duty built-in wheels and durable spring-loaded end handles deliver effortless mobility. Prominent bumpers protect gasketed aluminum valance at every critical impact point.

### Case Specifications

PART#	INSIDE L x W x H	LID DEPTH	BASE DEPTH
3SKB-4212W	42" x 11.75" x 6"/106cm x 29.8cm x 15.2cm	3"/7.6cm	3"/7.6cm
3SKB-4316W	43.5" x 16" x 6"/106cm x 40.6cm x 15.2cm	3"/7.6cm	3"/7.6cm
3SKB-5211W	52" x 11.75" x 6"/132cm x 29.8cm x 15.2cm	3"/7.6cm	3"/7.6cm
3SKB-5216W	52.25" x 16.5" x 6"/132.7cm x 41.9cm x 15.2cm	3"/7.6cm	3"/7.6cm
3SKB-6019W	60.25" x 19.25" x 6"/153cm x 48.9cm x 15.2cm	3"/7.6cm	3"/7.6cm
3SKB-6022W	60.25" x 22.25" x 6"/153cm x 56.5cm x 15.2cm	3"/7.6cm	3"/7.6cm
3SKB-6323W	63" x 23" x 10.25"/160cm x 58.4cm x 26cm	3"/7.6cm	3"/7.6cm

**Universal Low Profile Cases with velcro liner and 4 Patented Re-Positionable Corners.**

### Case Specifications

PART#	INSIDE L x W x H	LID DEPTH	BASE DEPTH
1SKB-3026	29" x 26" x 8.5"/73.7cm x 66cm x 21.6cm	4"/10.2cm	4.25"/10.8cm
1SKB-3423	34.5" x 22.75" x 9"/87.6cm x 57.8cm x 22.9cm	5.5"/14cm	3.5"/8.9cm
1SKB-4031	40" x 31" x 9.5"/101cm x 78.7cm x 24.1cm	4.75"/12cm	4.75"/12cm

**Rail-Pack Utility Cases**

### Case Specifications

PART#	INSIDE L x W x H
1SKB-H3611W	36.75" x 12" x 8.25"/93.3cm x 30.5cm x 21cm
1SKB-H4810W	47.125" x 9.875" x 9.375"/119.7cm x 25.1cm x 23.8cm
1SKB-H4812W	48.125" x 11.25" x 11.25"/122.2cm x 28.6cm x 28.6cm
1SKB-H4816W	48.25" x 16" x 12.375"/122.6cm x 40.6cm x 31.4cm
1SKB-H5020W	49.75" x 20" x 13.75"/126.4cm x 50.8cm x 34.9cm

## LS SERIES

**Luggage Style Carrying Cases with Horizontal Rib Design**

Heavy duty parallel rib cases offer contemporary, sleek styling, consistently fine craftsmanship and unequalled durability.



### Case Specifications

PART#	INSIDE L x W	LID DEPTH	BASE DEPTH	PART#	INSIDE L x W	LID DEPTH	BASE DEPTH
9P1108-01	11.25" x 8.375"/28.6cm x 21.3cm	2"/5.1cm	3"/7.6cm	1913N	19.25" x 13.875"/48.9cm x 35.2cm	5"/12.7cm	2"/5.1cm
9P1410-01	14.375" x 10.375"/36.5cm x 26.4cm	2.5"/6.4cm	3.5"/8.9cm	1914P	19.375" x 13.75"/49.2cm x 34.9cm	6"/15.2cm	2"/5.1cm
9P1410-02	14.375" x 10.375"/36.5cm x 26.4cm	3"/7.6cm	9"/22.9cm	1915N	19.375" x 15"/49.2cm x 38.1cm	7"/17.8cm	2"/5.1cm
9P1712-01	17.375" x 12.375"/36.5cm x 26.4cm	2"/5.1cm	2.5"/6.4cm	2010N	20.5" x 10"/52.1cm x 25.4cm	11"/27.9cm	2"/5.1cm
9P1712-02	17.375" x 12.375"/36.5cm x 26.4cm	2.5"/6.4cm	3.5"/8.9cm	2011P	20.75" x 11.5"/52.7cm x 29.2cm	4.50"/11.4cm	2"/5.1cm
9P1912-01	19" x 12.375"/48.3cm x 26.4cm	2.5"/6.4cm	3"/7.6cm	2011N	20.625" x 11.625"/52.4cm x 29.5cm	5"/12.7cm	2"/5.1cm
9P2012-01	20.375" x 12.375"/51.8cm x 26.4cm	2.75"/7cm	3.75"/9.5cm	2012P	20.375" x 12.375"/51.8cm x 31.4cm	4.50"/11.4cm	2"/5.1cm
9P2014-01	20.375" x 14"/51.8cm x 35.6cm	3"/7.6cm	4"/10.2cm	2013N	20.25" x 13.75"/51.4cm x 34.9cm	3.50"/8.9cm	2"/5.1cm
9P2016-01	20.375" x 16.375"/51.8cm x 35.6cm	3"/7.6cm	4.5"/11.4cm	2014P	20.375" x 14"/51.8cm x 35.6cm	4.50"/11.4cm	2"/5.1cm
9P2218-01	22" x 18"/55.6cm x 45.7cm	3.5"/8.9cm	4.5"/11.4cm	2016P	20.375" x 16.375"/51.8cm x 41.6cm	4.50"/11.4cm	2"/5.1cm
9P2517-01	25.375" x 17.375"/64.5cm x 44.1cm	4.25"/10.8cm	4.75"/12.1cm	2115P	21.5" x 15.375"/54.6cm x 39.1cm	4.50"/11.4cm	2"/5.1cm
9P2520-01	25.625" x 20.75"/65.1cm x 52.7cm	4.25"/10.8cm	4.75"/12.1cm	2214N	22.25" x 14"/56.5cm x 35.6cm	3.50"/8.9cm	2"/5.1cm
1108P	11.25" x 8.375"/28.6cm x 21.3cm	4.50"/11.4cm	2"/5.1cm	2218P	22" x 18"/55.9cm x 45.7cm	4.50"/11.4cm	2"/5.1cm
1108N	11.5" x 8.5"/29.2cm x 21.6cm	6.25"/11.4cm	2"/5.1cm	2314P	23.5" x 14.75"/59.7cm x 37.5cm	5"/12.7cm	2"/5.1cm
1209N	12" x 9"/30.5cm x 22.9cm	4.25"/10.8cm	2"/5.1cm	2407N	23.75" x 7"/60.3cm x 17.8cm	6"/15.2cm	2"/5.1cm
1212N	11.875" x 11.875"/30.2cm x 30.2cm	4.50"/11.4cm	2"/5.1cm	2419N	24.25" x 19.25"/61.6cm x 48.9cm	3.50"/8.9cm	1.50"/3.8cm
1307N	13.25" x 7.25"/33.7cm x 18.4cm	3"/7.6cm	2"/5.1cm	2516P	25" x 16.50"/63.5cm x 41.9cm	5.50"/14cm	2"/5.1cm
1308N	13.375" x 8.125"/34cm x 20.6cm	6"/15.2cm	2"/5.1cm	2517P	25.375" x 17.375"/64.5cm x 44.1cm	4.75"/12.1cm	2"/5.1cm
1309N	13.375" x 9.875"/34cm x 25.1cm	7"/17.8cm	2"/5.1cm	2520P	25.625" x 20.75"/65.1cm x 52.7cm	4.75"/12.1cm	2"/5.1cm
1409N	14.5" x 9"/36.8cm x 22.9cm	4.50"/11.4cm	2"/5.1cm	2714N	27" x 14"/68.6cm x 35.6cm	2.50"/6.4cm	2"/5.1cm
1410P	14.375" x 10.375"/36.5cm x 26.4cm	9.50"/24.1cm	2"/5.1cm	2717N	27.75" x 17.25"/70.5cm x 43.8cm	9.50"/24.1cm	2"/5.1cm
1413N	14" x 13.375"/35.6cm x 34cm	6"/15.2cm	2"/5.1cm	2906N	29.75" x 6.75"/75.6cm x 17.1cm	4.50"/11.4cm	2"/5.1cm
1511N	14.625" x 10.625"/37.1cm x 27cm	1.5"/3.8cm	1.5"/3.8cm	2912N	28.75" x 11.75"/73cm x 29.8cm	4.50"/11.4cm	2"/5.1cm
1610N	16.25" x 10"/41.3cm x 25.4cm	3"/7.6cm	1.5"/3.8cm	3121N	31.25" x 21.50"/79.4cm x 54.6cm	7.50"/19.1cm	2"/5.1cm
1611P	16.25" x 11"/41.3cm x 27.9cm	4.50"/11.4cm	2"/5.1cm	3515S	35.125" x 15.25"/89.2cm x 38.7cm	5.25"/13.3cm	2"/5.1cm
1611N	16.25" x 11.375"/41.3cm x 28.9cm	3"/7.6cm	1.5"/3.8cm	3618P	36.50" x 18.50"/92.7cm x 47cm	7.50"/19.1cm	2"/5.1cm
1613P	16.625" x 13.375"/42.2cm x 34cm	4.50"/11.4cm	2"/5.1cm	3725N	37" x 25"/94cm x 63.5cm	9.50"/19.1cm	2"/5.1cm
1712P	17.375" x 12.375"/44.1cm x 31.4cm	4.50"/11.4cm	2"/5.1cm	4209N	42.375" x 9.25"/107.6cm x 23.5cm	5"/12.7cm	2"/5.1cm
1809N	18" x 9"/45.7cm x 22.9cm	6"/15.2cm	2"/5.1cm	5017P	50.375" x 17.375"/128cm x 44.1cm	7.50"/19.1cm	2"/5.1cm
1909N	19.125" x 9.125"/48.6cm x 23.2cm	6"/15.2cm	2"/5.1cm	7210S	72.375" x 10"/183.8cm x 25.4cm	3"/7.6cm	2"/5.1cm
1912P	19" x 12.375"/48.3cm x 31.4cm	4.50"/11.4cm	2"/5.1cm	7219S	72.375" x 19.25"/183.8cm x 48.9cm	3"/7.6cm	2"/5.1cm



# UTILITY CASES

## MP SERIES

**Military Style Shipping Containers** All case hardware is protected by corner bumpers, designed for impact defense. Spring-loaded side handles with 90° stops for efficient transport. Heavy-duty twist latch system and padlock loops mounted to military tough "L" valance, designed for precise and reliable closure.



### Case Specifications

PART#	INSIDE L x W x H	LID DEPTH	BASE DEPTH
3SKB-1212M	12" x 12" x 8"/30.5cm x 30.5cm x 20.3cm	3.75"/9.5cm	4.25"/10.8cm
3SKB-1616M	16" x 16" x 13"/40.6cm x 40.6cm x 33cm	5"/12.7cm	8"/20.3cm
3SKB-1814M	18" x 14.875" x 9.5"/45.7cm x 37.8cm x 24.1cm	4.5"/11.4cm	5"/12.7cm
3SKB-2218M	22" x 18" x 9.625"/55.9cm x 45.7cm x 24.4cm	5"/12.7cm	4.625"/11.7cm
3SKB-2421M	24" x 21" x 9"/61cm x 53.3cm x 22.9cm	4"/10.2cm	5"/12.7cm
3SKB-2825M	27.75" x 25.75" x 18"/70.5cm x 65.4cm x 45.7cm	9"/22.9cm	9"/22.9cm
3SKB-3018M	30.25" x 19.25" x 17.5"/76.8cm x 48.9cm x 44.5cm	9"/22.9cm	9"/22.9cm

## MR SERIES

**Transport Containers** All case hardware is protected by corner bumpers, designed for impact defense with heavy-duty pull handle system and durable quiet-glide wheels.



Available with metal, telescoping handle.

### Case Specifications

PART#	INSIDE L x W x H	LID DEPTH	BASE DEPTH
3SKB-1413MR	14.5" x 13.125" x 7.625"/36.8cm x 33.3cm x 19.4cm	2.125"/5.4cm	5.5"/14cm
3SKB-1812MR	18.375" x 12.125" x 7.75"/46.7cm x 30.8cm x 19.7cm	2.625"/6.7cm	5.125"/13cm
3SKB-1818MR	18" x 18" x 13"/45.7cm x 45.7cm x 33cm	5"/12.7cm	8"/20.3cm
3SKB-1913MR	19" x 13.375" x 8.625"/48.3cm x 34cm x 21.9cm	3.25"/8.3cm	5.375"/13.7cm
3SKB-1914MR	19.375" x 14" x 10"/49.2cm x 35.6cm x 25.4cm	4"/10.2cm	6"/15.2cm
3SKB-1916MR	19" x 16" x 10"/48.3cm x 40.6cm x 25.4cm	4"/10.2cm	6"/15.2cm
3SKB-2114MR	21.375" x 14.25" x 8.875"/54.3cm x 36.2cm x 22.5cm	3.5"/8.9cm	5.375"/15.2cm
3SKB-2218PR	22" x 18" x 8"/55.9cm x 45.7cm x 20.3cm	3.5"/8.9cm	4.5"/11.4cm
3SKB-2417MR	24" x 17" x 14.5"/61cm x 43.2cm x 36.8cm	5.25"/13.3cm	9.25"/23.5cm
3SKB-2523MR	25" x 23" x 14"/63.5cm x 58.4cm x 35.6cm	6"/15.2cm	8"/20.3cm
3SKB-2921MR	29" x 21.5" x 17"/73.7cm x 54.6cm x 43.2cm	8"/20.3cm	9"/22.9cm
3SKB-3025MR	30" x 25" x 15"/76.2cm x 63.5cm x 38.1cm	7.5"/19.1cm	7.5"/19.1cm
3SKB-3426MR	34" x 26" x 18.75"/86.4cm x 66cm x 47.6cm	7.75"/19.7cm	11"/27.9cm
3SKB-3621MR	36.5" x 21.5" x 18.25"/92.7cm x 54.6cm x 46.4cm	7.25"/18.4cm	11"/27.9cm

# Innovating Since 1977



**i Series**

**AV/Media**

**R Series**

**Pull Handle**

**Shock Racks**

**Luggage Style**

**US Racks**

**Heavy Duty**

**Roto X**

**Low Profile**

**Rolling Roto Racks**

**ATA Utility**

**Soft Racks**

**Flat Screen  
Transport**

**“Today, SKB Cases are known around the world as the leading innovator and manufacturer of the finest Industrial/Military equipment cases.”**

